

COMMA

e
1

LANGUAGE: **COMMA - REF. #haraEL**

OBJECTS CURRENTLY DESIGNED: **3**

LIMITED EDITION OF: **150**

EXCLUSIVITY AGREEMENT: **NO**



COMMA V1 — stool

HxWxL

38.5x34x34 cm

15.1x13.4x13.4 “

CM1_BR



COMMA V2 — bench

HxWxL

90x40x130 cm

35.4x15.7x51.1 “

CM2_BR



COMMA V3 — high stool

HxWxL

90x40x130 cm

35.4x15.7x51.1 “

CM3_BR

PRESS RELEASE

Comma is a 21st Century collection of seatings made by Italian artisans in bronze with a green patina. It is part of the collectible design language Comma that has been developed by the Edizione Limitata's art research team in Milan. The polished seating contrast with the rawest surface of the structure, the negative of the mould is handsculpted in order to achieve this materic texture.

Images show a V1, V2 and V3 version in **Green Patina Bronze**

FINISHINGS

customizable on request

e
1



Aluminum



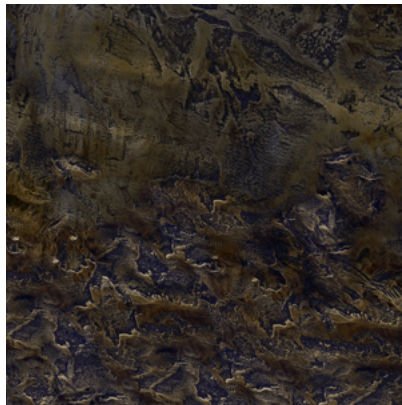
Bronze



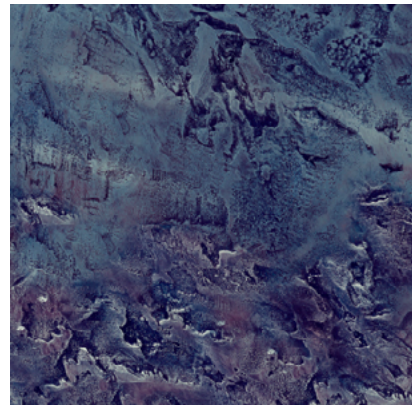
Green Patina Bronze



Red Patina Bronze



Brown Patina Bronze



Blue Bronze

DETAILS

- Every piece has a marked and progressively **numbered metal plate**. Each product of Edizione Limitata Factory is unique and part of a limited edition serie.
- On request, **Edizione limitata offers vizualization service in order to customize the pieces in different materials and dimensions**. The customer will be assisted by the Edizione Limitata's team of designers. Materials samples are available on demand.
- Small variations in finishing and colors - as well as the ones between pieces - are innate and natural, especially for solid wood pieces like Bayou ones. They clearly show the origin of raw materials and the craftsmanship of the process.
- **Each material will have a different cost**, for each variation Edizione Limitata will provide a specific quote different from the one in the pictures.